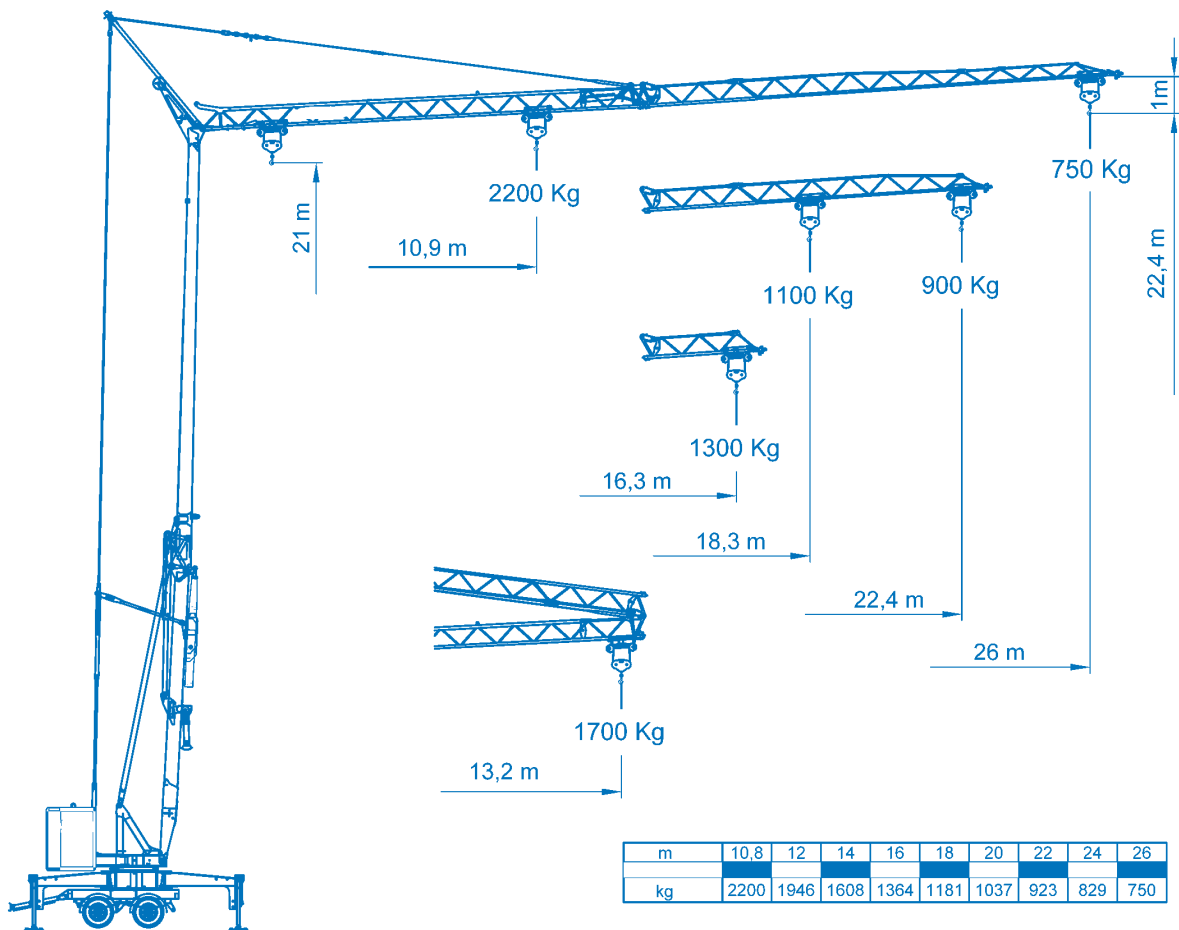
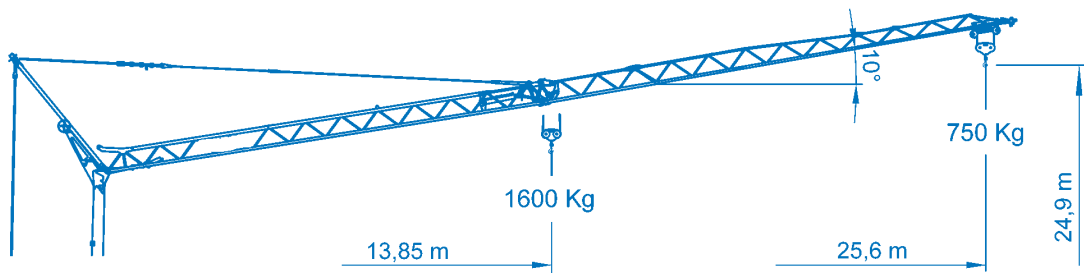
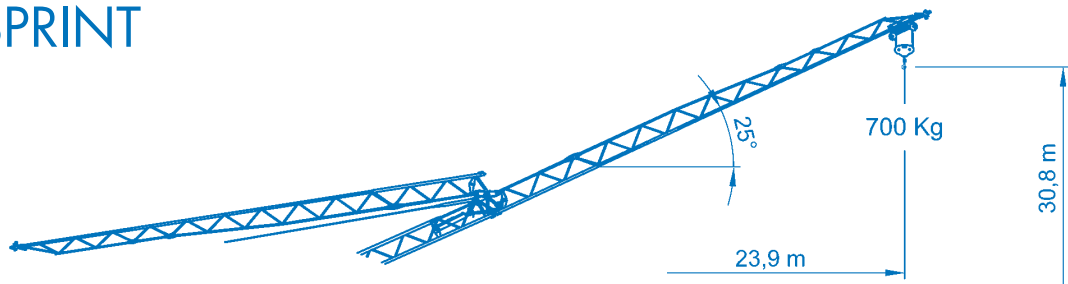
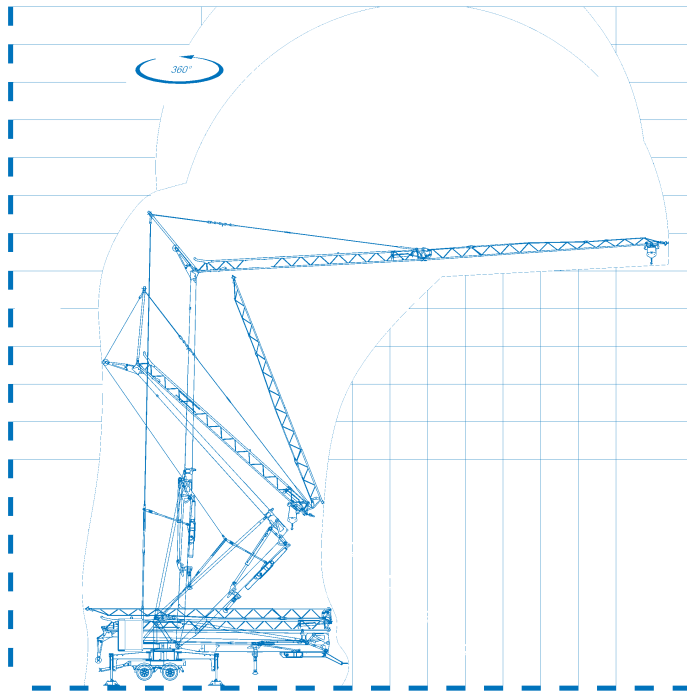
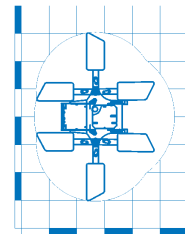
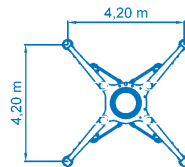
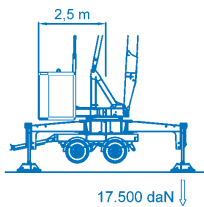
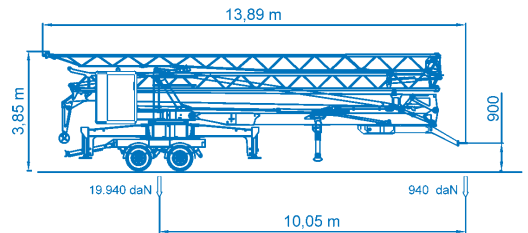
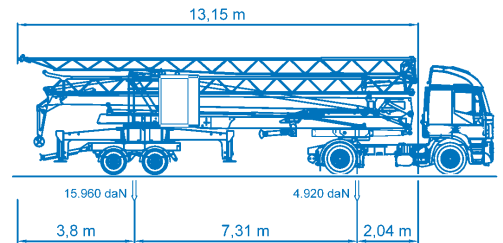


UNTENDREHER EUROSPRINT





URUG, Torino CRM, VIGORAB SPA - 19115



	50 Hz V +10%-10%	m/l'	5	15	22	42
	230 V 3 kW kg		2200	1300 2200	750 1000	300 750
	230 V 4,5 kW kg		2200	1750 2200	850 1000	500 750
	230 V 6 kW kg		2200	2200	1000	750
	400 V 8 kVA kg		2200	2200	1000	750
kW 7,5 Inverter						
	m/l'		17,8	28,6	39,3 / 53,5	
	kW 3 Inverter					
	n/l'		0,15	0,42	0,84	
	kW 1,55 Inverter					
	min		12			
	kW		2,2			
	25 - 80 km/h		12.480 kg		2 x 4200 kg	

EUROGRU®

Am Dornbusch 10
64390 Erzhausen
www.eurogru.de

Telefon: +49 (0) 6150 13440
Fax: +49 (0) 6150 7002
Email: info@eurogru.de